



TILLOTSON LTD., CLASH INDUSTRIAL ESTATE,  
TRALEE, CO. KERRY, IRELAND

PHONE: +353 66 7121911 FAX: +353 66 7124503

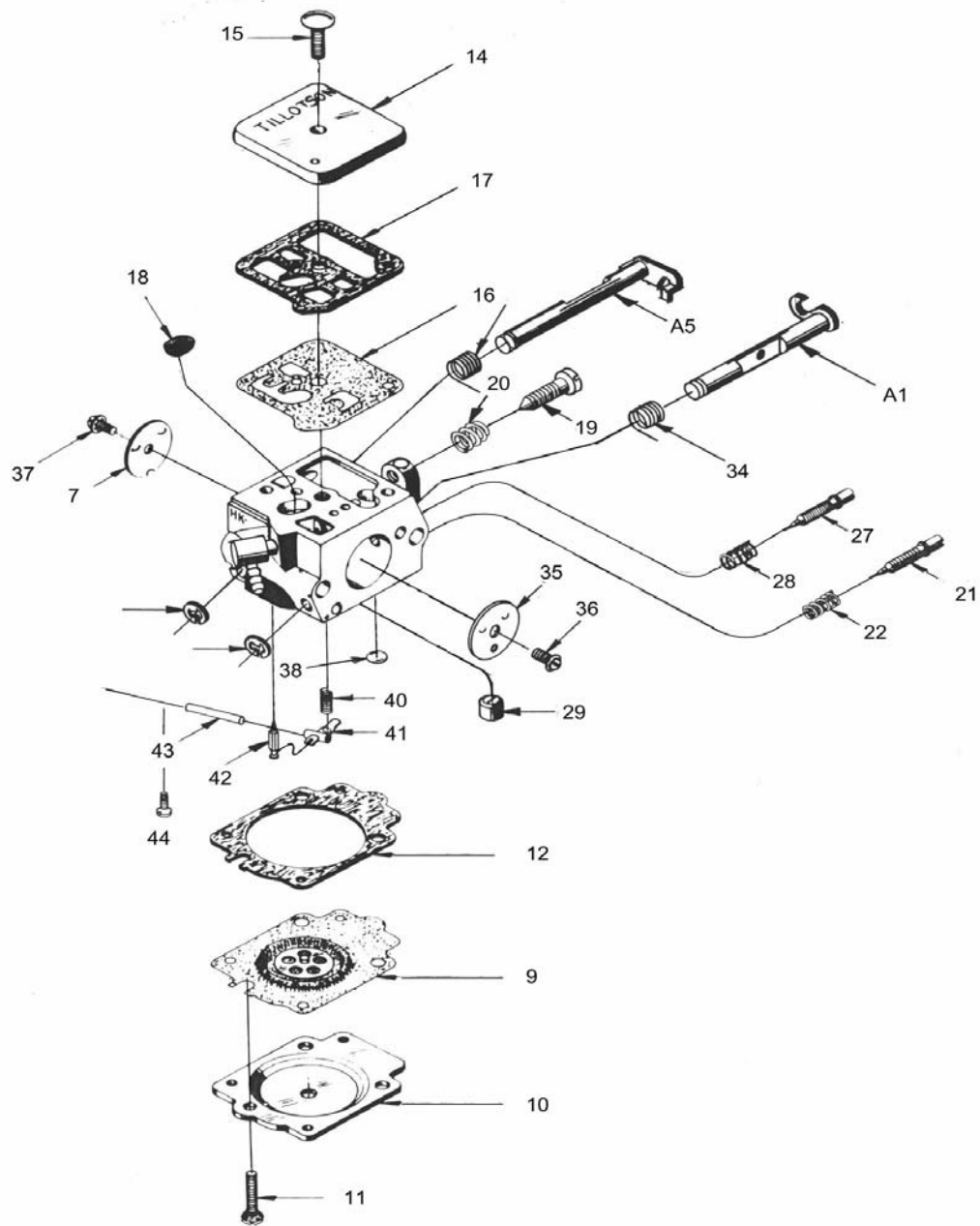
e-mail: [sales@tillotson.ie](mailto:sales@tillotson.ie)



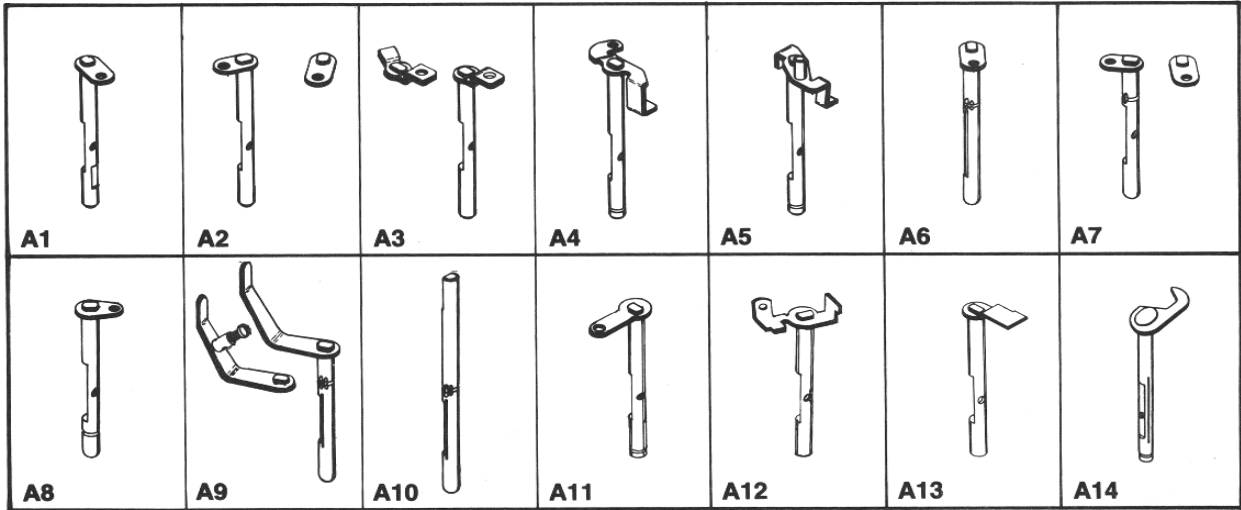
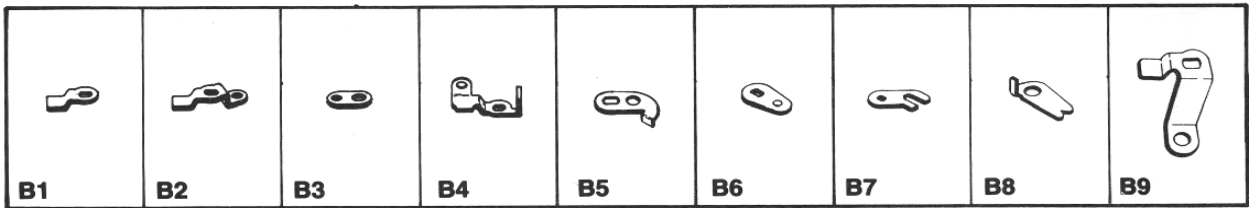
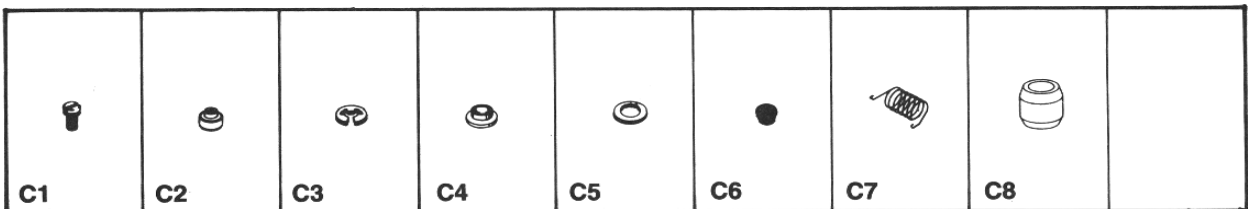
## **PARTS LIST**

Last update: JULY 2000

Illustration of basic parts standard throughout HE series carburettor.  
For individual model listing see following pages.



Parts illustrated are typical in appearance  
and may not look exactly like the part required

**SHAFT & LEVER ASSEMBLIES****LEVERS****MISCELLANEOUS PARTS**

Carburetor Model		HE-1A	HE-2A	HE-3A
Customer		Electrolux Sweden	Andreas Stihl	Alpina Italy
Equipment Model No.			.625 - .628 Diameter	.592-.595 Diameter
Venturi		19/32" 15.08MM	15.88 - 15.95MM	15.0-15.1MM
Ref. No.	Part Name			
1	Body - Channel Screen	95-180		95-180
2	Body - Channel Screen Ret. Ring	55A-212	55A-223	55A-212
3	Check Valve Disc.			
4	Check Valve Disc. Stop			
6	Choke - Friction Spring	24C-8	24C-193	24C-281
A6	Choke - Shaft & Lever			
A9	Choke - Shaft & Lever			
A10	Choke - Shaft			
7	Choke - Shutter	14-471	14-498	14-498
	Choke - Washer	78A-226		
	Choke - Lever	25-458	25-472	26-1291
	Choke - Shutter Screw	15C-20	15C-20	15C-20
	Choke - Friction Ball			206-121
+*9	Diaphragm	237-606	237-606	237-606
10	Diaphragm - Cover	91A-344	91B-205	91A-342
11	Diaphragm - Cover Ret. Screw (3)	15C-6	15C-6	15C-6
+*12	Diaphragm - Gasket	16B-273	16B-273	16B-273
13	Flange Gasket			
14	Fuel - Pump Cover	91B-970	91B-970	91A-330
15	Fuel - Pump Cover Ret. Screw	15B-370	15B-370	15B-370
+*16	Fuel - Pump Diaphragm -	237-205	237-205	237-205
+*17	Fuel - Pump Gasket	16B-272	16B-272	16B-272
*18	Fuel - Strainer Screen	95-177	95-177	95-177
19	Idle Speed - Adjustment Screw	15C-3	15C-3	15B-404
20	Idle Speed - Adjustment Screw Spring	24C-15	24C-15	24C-15
21	Low Speed - Mixture Needle	43A-132	43A-132	43A-132
22	Low Speed - Mixture Needle Spring	24B-331	24B-331	24B-331
*23	Inlet - Control Lever	155A-53	155A-53	155A-53
24	Inlet - Control Lever Fulcrum Pin	32-80	32-80	32-80
	Inlet - Fulcrum Pin Retaining Screw	15B-329	15B-329	15B-329
*25	Inlet - Needle	34-219	34-219	34-219
26	Inlet - Tension Spring	24B-378	24B-374	24B-374
27	High Speed - Mixture Screw	43A-149	43A-132	43A-149
28	High Speed - Mixture Screw Spring	24B-331	24B-331	24B-331
29	Main Nozzle		363-559	
	Main Nozzle Welch Plug	179-60	179-60	
B2	Throttle - Lever	12B-417		12B-289
B3	Throttle - Shaft Sleeve (2)			102-217
B4	Throttle - Lever			
C1	Throttle - Lever Ret. Screw			
C2	Throttle - Lever Retaining Screw	15B-348		15B-348
C3	Throttle - Shaft 'E' Ring	29-220		
A1	Throttle - Shaft & Lever	13-2062	13-2016	13-2007
A3	Throttle - Shaft & Lever			
A4	Throttle - Shaft & Lever			
34	Throttle - Shaft Return Spring	24C-241	24B-458	24B-474
35	Throttle - Shutter		14A-6	14-491
36	Throttle - Shutter Ret. Screw	15C-20	15C-20	15C-20
37	Choke Shutter Screw			
38	Welch Plug			
40	Inlet Spring			
41	Inlet Lever			
42	Inlet Needle			
43	Fulcrum Pin			
44	Fulcrum Screw			
*	Metering - By Pass Chamber Welch Plug	179-59	179-59	179-59
	Repair Parts Kit	RK-1HE	RK-1HE	RK-1HE
	Diaphragm - & Gasket Set	DG-1HK	DG-1HK	DG-1HK

\*Indicates contents of Repair Kit

+Indicates contents of Diaphragm & Gasket Set

Carburetor Model		HE-4A	HE-5A	HE-6A
Customer		Jonsereds	Andreas Stihl	Alpina
Equipment Model No.				
Venturi		.531 Diameter	.531 Diameter	5/3" - 16MM
Ref. No.	Part Name			
1	Body - Channel Screen	95-180		
2	Body - Channel Screen Ret. Ring	55A-212		
3	Check Valve Disc.			
4	Check Valve Disc. Stop			
6	Choke - Friction Spring			206-121 24B-281
A6	Choke - Shaft & Lever			
A9	Choke - Shaft & Lever			
A10	Choke - Shaft			
7	Choke - Shutter	14-471	14A-1	
	Choke - Washer			
	Choke - Lever	26-1242		
	Choke - Shutter Screw	15C-20	15C-20	14A-23
	Choke Shutter Screw			15C-20
+*9	Diaphragm	237-606	237-606	237-606
10	Diaphragm - Cover	91A-344	91B-205	91A-344
11	Diaphragm - Cover Ret. Screw (3)	15C-6	15C-6	15C-6
+*12	Diaphragm - Gasket	16B-273	16B-273	16B-273
13	Flange Gasket			
14	Fuel - Pump Cover	91B-214	91B-214	91B-218
15	Fuel - Pump Cover Ret. Screw	15B-370	15B-370	15B-370
+*16	Fuel - Pump Diaphragm -	237-205	237-205	237-160
+*17	Fuel - Pump Gasket	16B-272	16B-272	16B-272
*18	Fuel - Strainer Screen	95-177	95-177	95-177
19	Idle Speed - Adjustment Screw	15C-3	15C-3	15B-404
20	Idle Speed - Adjustment Screw Spring	24C-15	24C-15	24C-15
21	Low Speed - Mixture Needle	43A-132	43A-132	43A-132
22	Low Speed - Mixture Needle	24B-331	24B-331	24B-331
				155A-53
*23	Inlet - Control Lever	155A-53	155A-53	32-80
24	Inlet - Control Lever Fulcrum Pin	32-80	32-80	
	Inlet - Fulcrum Pin Retaining Screw	15B-329		15B-329
*25	Inlet - Needle	34-219		34-219
26	Inlet - Tension Spring	24B-369	24B-374	24B-384
27	High Speed - Mixture Screw	43A-132	43A-132	43A-149
28	High Speed - Mixture Screw Spring	24B-331	24B-331	24B-331
29	Main Nozzle		363-559	363-559
B2	Throttle - Lever	12B-259	12B-392	12B-417
B3	Throttle - Shaft Sleeve (2)	102-217	102-217	102-217
B4	Throttle - Lever			
C1	Throttle - Lever Ret. Screw			
C2	Throttle - Lever Retaining Screw	15B-348	15B-348	15B-348
C3	Throttle - Shaft 'E' Ring	55A-212		
A1	Throttle - Shaft & Lever	13-2025	13-2007	13-2080
A3	Throttle - Shaft & Lever			26-1291
A4	Throttle - Shaft & Lever			
34	Throttle - Shaft Return Spring	24B-456	24B-444	24B-474
35	Throttle - Shutter	14-432	14-432	14A-44
36	Throttle - Shutter Ret. Screw	15C-20	15C-20	15C-20
37	Choke Shutter Screw			
38	Welch Plug			
40	Inlet Spring			
41	Inlet Lever			
42	Inlet Needle			
43	Fulcrum Pin			
44	Fulcrum Screw			
	Main Nozzle Welch Plug	179-60		
*	Metering - By Pass Chamber Welch Plug	179-59	179-59	179-59
	Repair Parts Kit	RK-1HE	RK-1HE	RK-1HE
	Diaphragm - & Gasket Set	DG-1HK	DG-1HK	DG-1HK

\*Indicates contents of Repair Kit

+Indicates contents of Diaphragm & Gasket Set

Carburetor Model		HE-7A	HE-8A	HE-9B
Customer		Alpina	Opem	Wacker Germany
Equipment Model No.			.621-.625 Diameter	.453 Diameter
Venturi		11/16"-17.5MM	15.8-15.9MM	11.5MM
Ref. No.	Part Name			
7	Choke - Shutter		27-320	14A-6
	Choke - Washer			
	Choke - Lever			
	Choke - Shutter Screw	14A-23		
	Choke - Shutter Screw	15C-20	15C-20	15C-20
	Choke - Friction Ball	206-121	206-121	206-121
	Choke - Friction Spring	24B-281	24B-281	24B-281
	Choke Spacing Sleeve			102-221
+*9	Diaphragm	237-606	237-606	237-606
10	Diaphragm - Cover	91A-344	91A-373	91A-344
11	Diaphragm - Cover Ret. Screw (3)	15C-6	15C-6	15C-6
+*12	Diaphragm - Gasket	16B-273	16B-273	16B-273
13	Flange Gasket			
14	Fuel - Pump Cover	91B-218	91B-214	91B-218
15	Fuel - Pump Cover Ret. Screw	15B-370	15B-370	15B-370
+*16	Fuel - Pump Diaphragm -	237-205	237-205	237-160
+*17	Fuel - Pump Gasket	16B-272	16B-272	16B-272
*18	Fuel - Strainer Screen	95-177	95-177	95-177
19	Idle Speed - Adjustment Screw	15B-404	15B-404	15B-404
20	Idle Speed - Adjustment Screw Spring	24C-15	24C-15	24C-15
21	Low Speed - Mixture Needle	43A-132	43A-132	
22	Low Speed - Mixture Needle Spring	24B-331	24B-331	
*23	Inlet - Control Lever	155A-53	155A-53	155A-53
24	Inlet - Control Lever Fulcrum Pin	32-80	32-80	32-80
	Inlet - Fulcrum Pin Retaining Screw	15B-329	15B-329	15B-329
*25	Inlet - Needle	34-219	34-219	34-219
26	Inlet - Tension Spring	24B-384	24B-374	
27	High Speed - Mixture Screw	43A-149	43A-149	
28	High Speed - Mixture Screw Spring	24B-331	24B-331	
29	Main Nozzle	363-559	363-559	363-559
B2	Throttle - Lever	12B-477	12B-383	12-1215
B3	Throttle - Shaft Sleeve (2)	102-217		
B4	Throttle - Lever			
C1	Throttle - Lever Ret. Screw			
C2	Throttle - Lever Retaining Screw	15B-348	15B-348	15B-348
C3	Throttle - Shaft 'E' Ring			
A1	Throttle - Shaft & Lever	13-2080	13-1991	13-2130
A3	Throttle - Shaft & Lever	26-1291	26-1196	26A-227
A4	Throttle - Shaft & Lever			
34	Throttle - Shaft Return Spring	24B-474	24B-440	24B-458
35	Throttle - Shutter	14A-44	14-494	14-432
36	Throttle - Shutter Ret. Screw	15C-20	15C-20	15C-20
37	Choke Shutter Screw			
38	Welch Plug			
40	Inlet Spring			
41	Inlet Lever			
42	Inlet Needle			
43	Fulcrum Pin			
44	Fulcrum Screw			
	Main Nozzle Welch Plug			
*	Metering - By Pass Chamber Welch Plug	179-59	179-59	179-59
	Main Jet			49B-87
	Idle Jet			49B-76
	Repair Parts Kit	RK-1HE	RK-1HE	RK-1HE
	Diaphragm - & Gasket Set	DG-1HE	DG-1HE	DG-1HE

\*Indicates contents of Repair Kit

+Indicates contents of Diaphragm & Gasket Set

<b>Carburetor Model</b>		<b>HE-10A</b>	
<b>Customer</b>		Alpina	
<b>Equipment Model No.</b>			
<b>Venturi</b>		5/8" - 16MM	
<b>Ref. No.</b>	<b>Part Name</b>		
6	Choke - Friction Spring	24B-281	
A6	Choke - Shaft & Lever		
A9	Choke - Shaft & Lever		
A10	Choke - Shaft		
7	Choke - Shutter		
	Choke - Washer		
	Choke - Lever		
	Choke - Shutter Screw	14A-23	
	Choke - Friction Ball	206-121	
	Choke - Shutter Screw	15C-20	
+*9	Diaphragm	237-606	
10	Diaphragm - Cover	91A-344	
11	Diaphragm - Cover Ret. Screw (3)	15C-6	
+*12	Diaphragm - Gasket	16B-273	
13	Flange Gasket		
14	Fuel - Pump Cover	91B-218	
15	Fuel - Pump Cover Ret. Screw	15B-307	
+*16	Fuel - Pump Diaphragm -	237-160	
+*17	Fuel - Pump Gasket	16B-272	
*18	Fuel - Strainer Screen	95-177	
19	Idle Speed - Adjustment Screw	15B-404	
20	Idle Speed - Adjustment Screw Spring	24C-15	
21	Low Speed - Mixture Needle	43A-187	
22	Low Speed - Mixture Needle Spring	24C-270	
*23	Inlet - Control Lever	155A-53	
24	Inlet - Control Lever Fulcrum Pin	32-80	
	Inlet - Fulcrum Pin Retaining Screw	15B-329	
*25	Inlet - Needle	34-219	
26	Inlet - Tension Spring	24B-384	
27	High Speed - Mixture Screw	43A-206	
28	High Speed - Mixture Screw Spring	24C-270	
29	Main Nozzle	363-651	
	Limiter Module	198-402	
	Limiter Cap (2)	318-32	
B2	Throttle - Lever	12B-417	
B3	Throttle - Shaft Sleeve (2)	102-217	
B4	Throttle - Lever		
B8	O' Ring - Mixture Needle (2)	44-350	
C1	Throttle - Lever Ret. Screw		
C2	Throttle - Lever Retaining Screw	15B-348	
C3	Throttle - Shaft 'E' Ring		
A1	Throttle - Shaft & Lever	13-2080	
A3	Throttle - Shaft & Lever	26-1291	
A4	Throttle - Shaft & Lever		
34	Throttle - Shaft Return Spring	24B-474	
35	Throttle - Shutter	14A-44	
36	Throttle - Shutter Ret. Screw	15C-20	
37	Choke Shutter Screw		
38	Welch Plug		
40	Inlet Spring		
41	Inlet Lever		
42	Inlet Needle		
43	Fulcrum Pin		
44	Fulcrum Screw		
	Main Nozzle Welch Plug		
*	Metering - By Pass Chamber Welch Plug	179-59	
	Repair Parts Kit	RK-1HE	
	Diaphragm - & Gasket Set	DG-1HE	

\*Indicates contents of Repair Kit

+Indicates contents of Diaphragm & Gasket Set